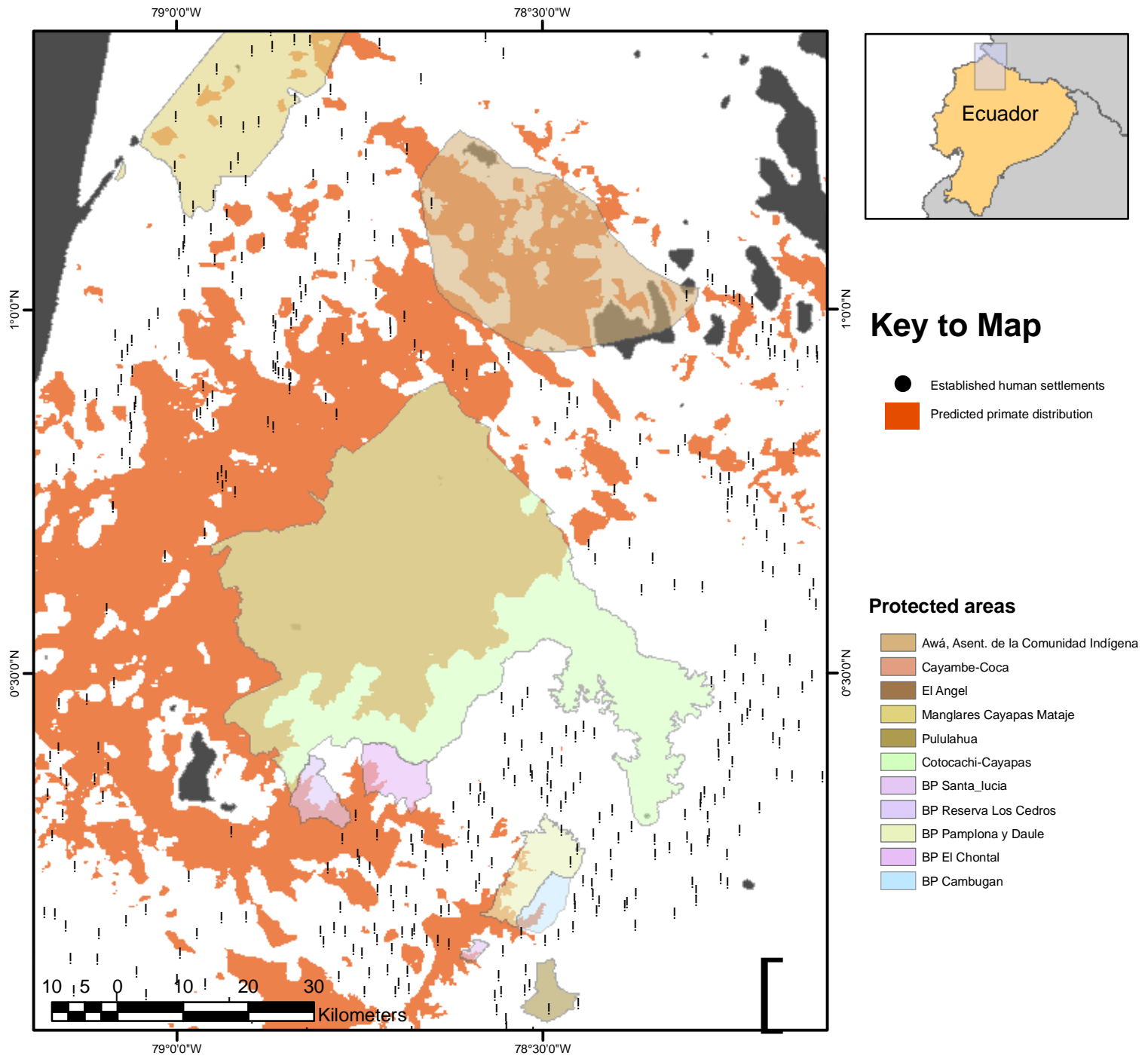


Human settlements and predicted distribution of *Ateles fusciceps*



Key to Map

- Established human settlements
- Predicted primate distribution

Protected areas

- Awá, Asent. de la Comunidad Indígena
- Cayambe-Coca
- El Angel
- Manglares Cayapas Mataje
- Pululahua
- Cotocachi-Cayapas
- BP Santa_Lucia
- BP Reserva Los Cedros
- BP Pamplona y Daule
- BP El Chontal
- BP Cambagan

Towns identified from following 1:250,000 maps:

- Ibarra NA-17-16
- Esmeraldas NA-17-15
- San Lorenzo NA-17-12

Contact: Dr Mika Peck email: m.r.peck@sussex.ac.uk
Website www.primenet.org.uk

