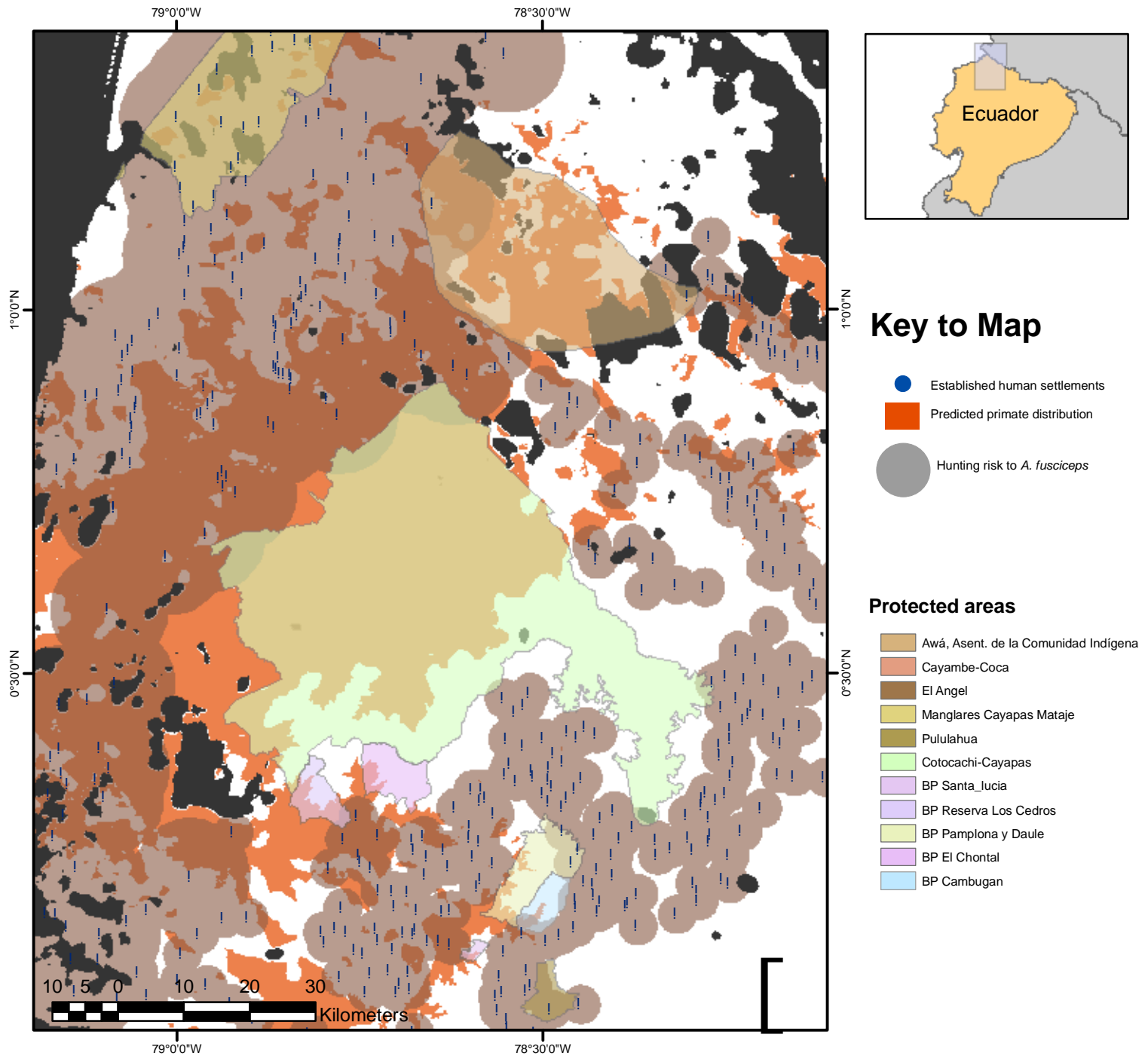


Hunting risk around human settlements for *Ateles fusciceps*



Key to Map

- Established human settlements
- Predicted primate distribution
- Hunting risk to *A. fusciceps*

Protected areas

- Awá, Asent. de la Comunidad Indígena
- Cayambe-Coca
- El Angel
- Manglares Cayapas Mataje
- Pululahua
- Cotocachi-Cayapas
- BP Santa_Lucia
- BP Reserva Los Cedros
- BP Pamplona y Daule
- BP El Chontal
- BP Cambugan

Towns identified from following 1:250,000 maps:

Ibarra NA-17-16
Esmeraldas NA-17-15
San Lorenzo NA-17-12

Lowland (below 500 masl) hunting risk of 9km radius
Highland (Over 500 masl) hunting risk 3km radius

Contact: Dr Mika Peck email: m.r.peck@sussex.ac.uk
Website www.primenet.org.uk

