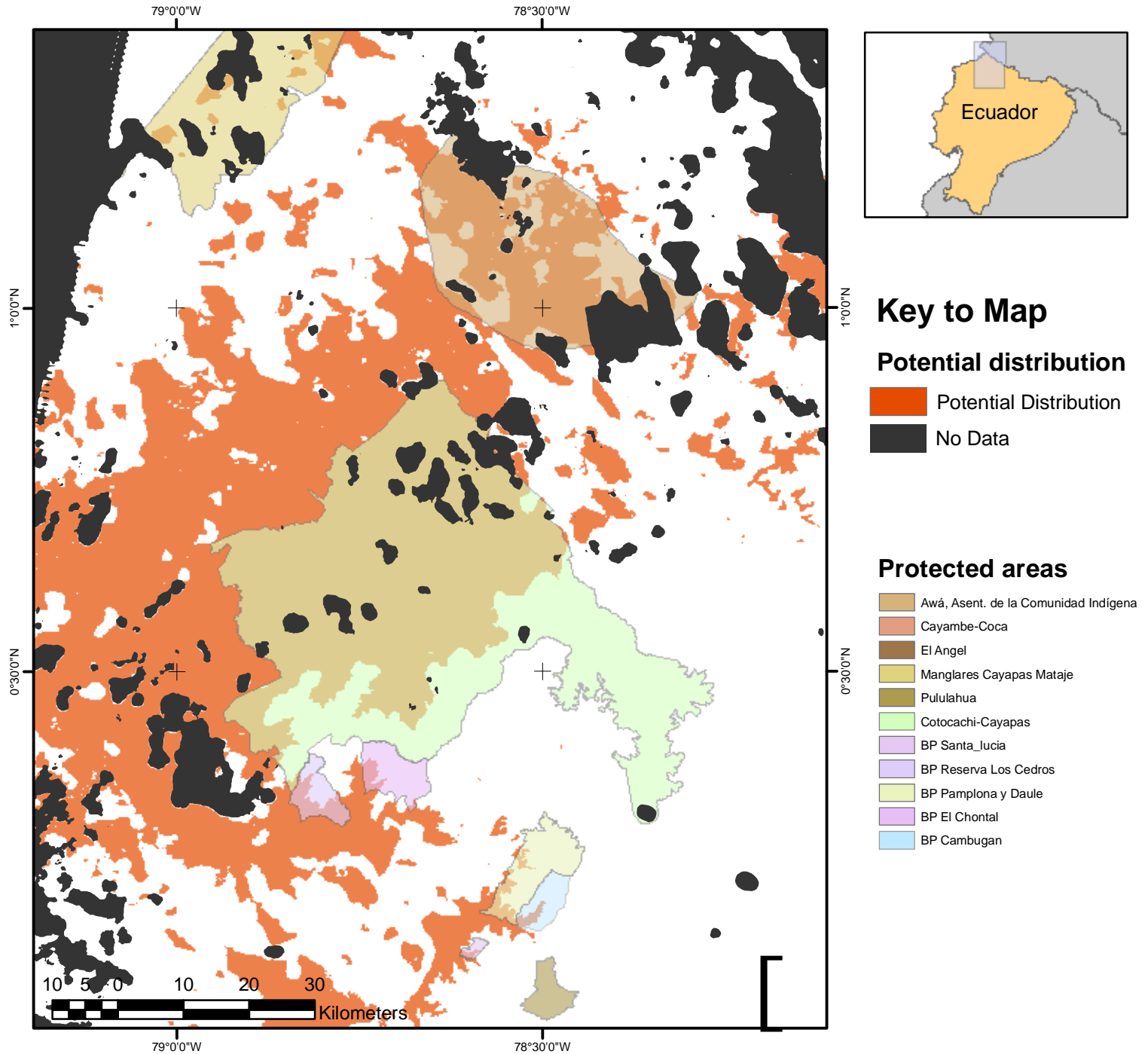


Predicted potential distribution of *Ateles fusciceps*



Potential distribution of *Ateles fusciceps* in NW Ecuador.

Primate distribution predicted through MAXENT using historical observations and PRIMENET survey records. Predicted distribution cut to PRIMENET LANDSAT mosaic of remaining forest (80% forest in 500 ha).

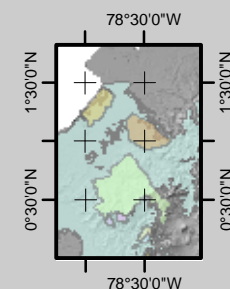
GIS analysis carried out in ESRI ARCMAP 9.2.

Acknowledgements

MAXENT modelling James Thorn, University of Oxford -Brookes.
Historical *Ateles fusciceps* distribution data from Diego Tirira.

Contact: Dr Mika Peck email: m.r.peck@sussex.ac.uk
Website www.primenet.org.uk

MAXENT modelling to predict historical distribution of *A. fusciceps*



Light blue: Predicted historical distribution of *Ateles fusciceps*