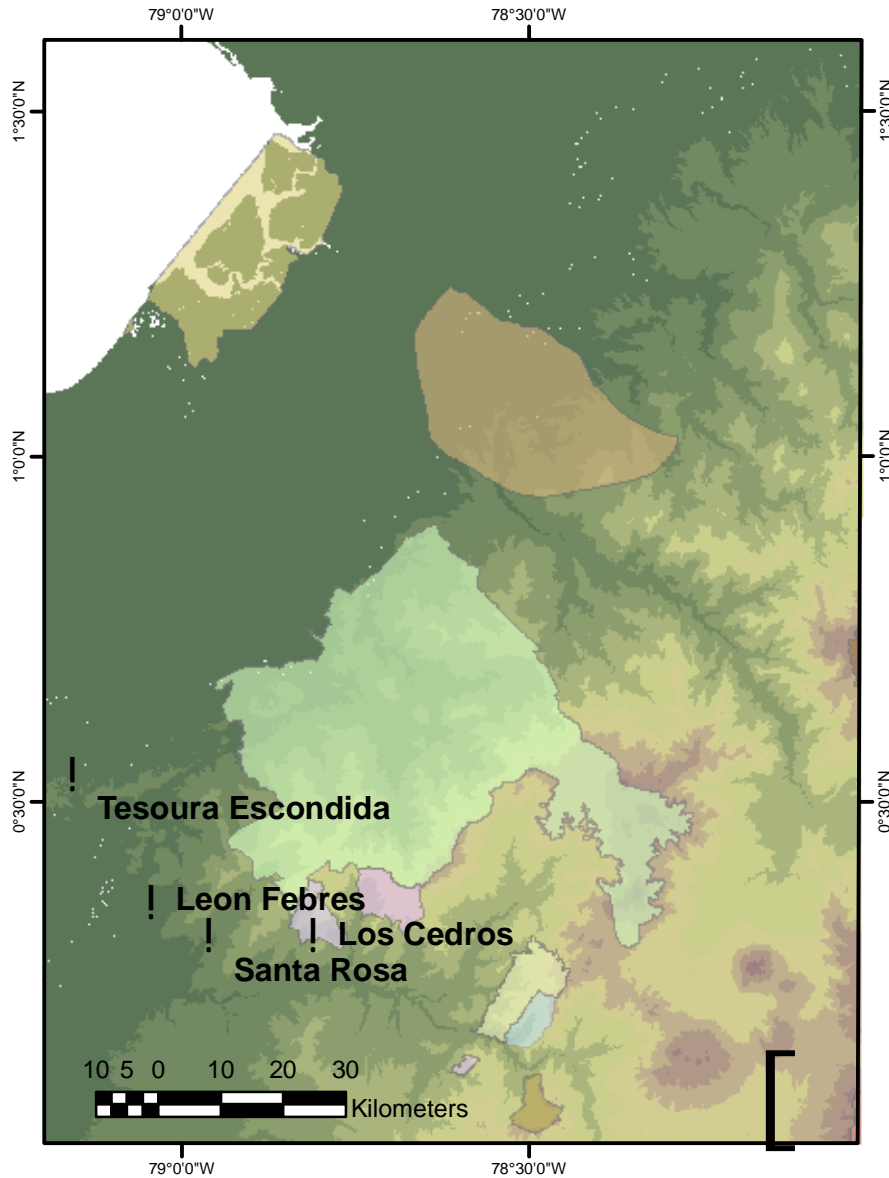


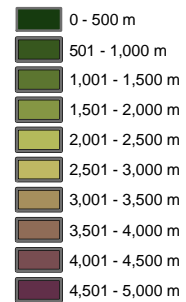
# Ateles fusciceps field surveys (2007)



## Key to Map

! Field surveys

## Elevation



## Protected areas



### Map showing field survey sites and elevation

Populations of brown-headed spider monkey were confirmed using line transect DISTANCE sampling methods and rapid populations assessment playback techniques (for methods see [www.primenet.org.uk](http://www.primenet.org.uk))

Mapped populations were confirmed in 2007 and recent survey information is available on the PRIMENET website [www.primenet.org.uk](http://www.primenet.org.uk).

Contact: Dr Mika Peck email:[m.r.peck@sussex.ac.uk](mailto:m.r.peck@sussex.ac.uk)

### Using playback survey techniques in the field



Abigail Baird using the playback technique at the Los Cedros Reserve